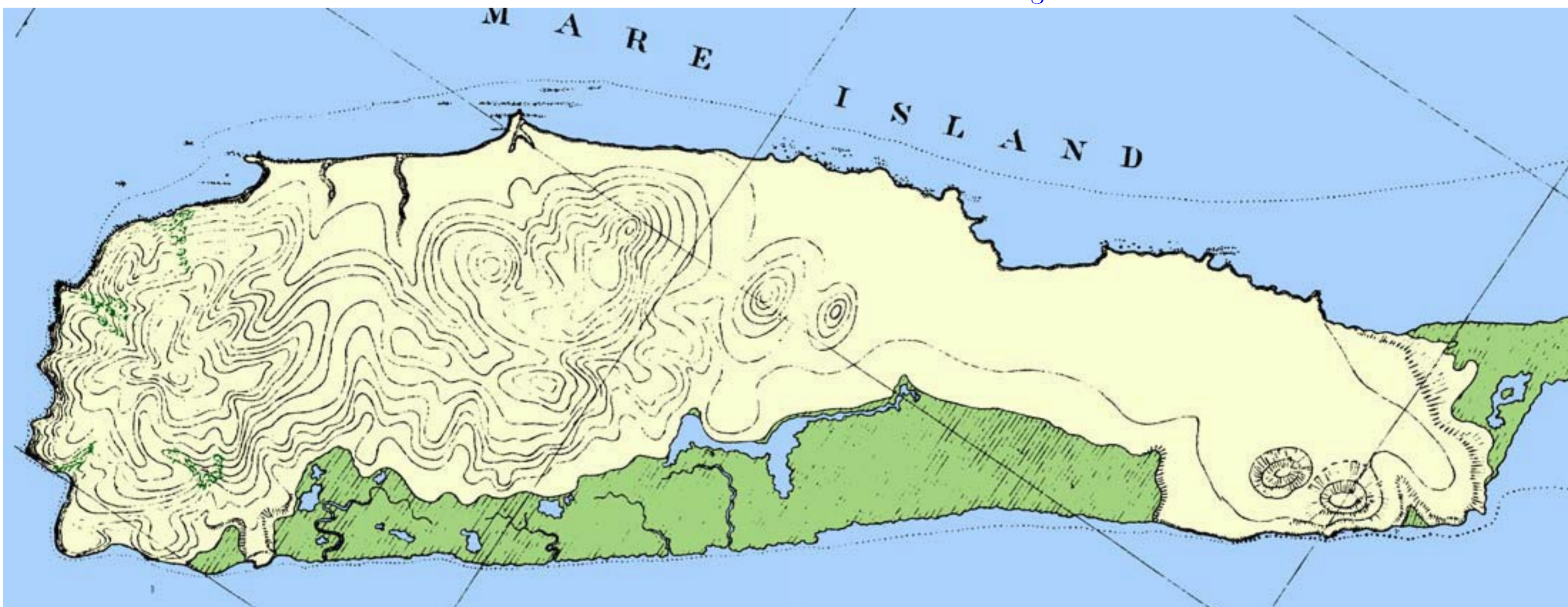


Mare Island Navy Yard Maps of the Island

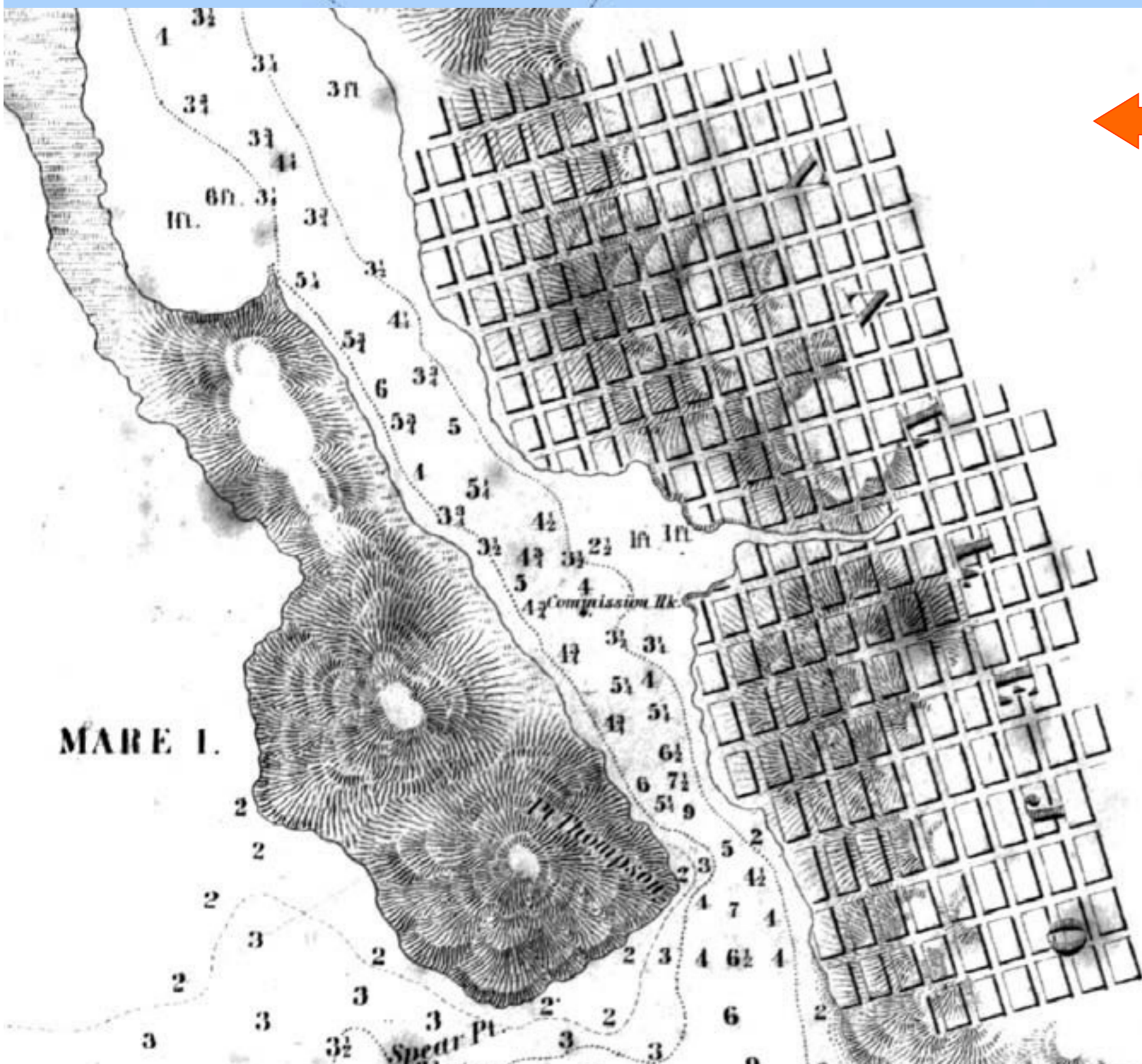
From the files of Archaeological Resource Service



Mare Island as mapped about 1850, prior to the Navy's arrival, and prior to the establishment of the private shipyard. The light green areas bordering the island are salt marshes, the dark green areas at the south are groves of oak.

The island, as mapped here, constitutes 956 acres of usable land. This is what the Navy bought.

The Mare Island Naval Shipyard encompassed 5,667 total acres when it closed. Of this area, 2,592 acres are dry land and 3,075 acres are wetlands. The wetlands are made up of dredge spoils, ponds, and marshland. Mare Island Naval Shipyard occupied all of the original extent of Mare Island, and large areas of filled land surrounding the original 956 acres of uplands.

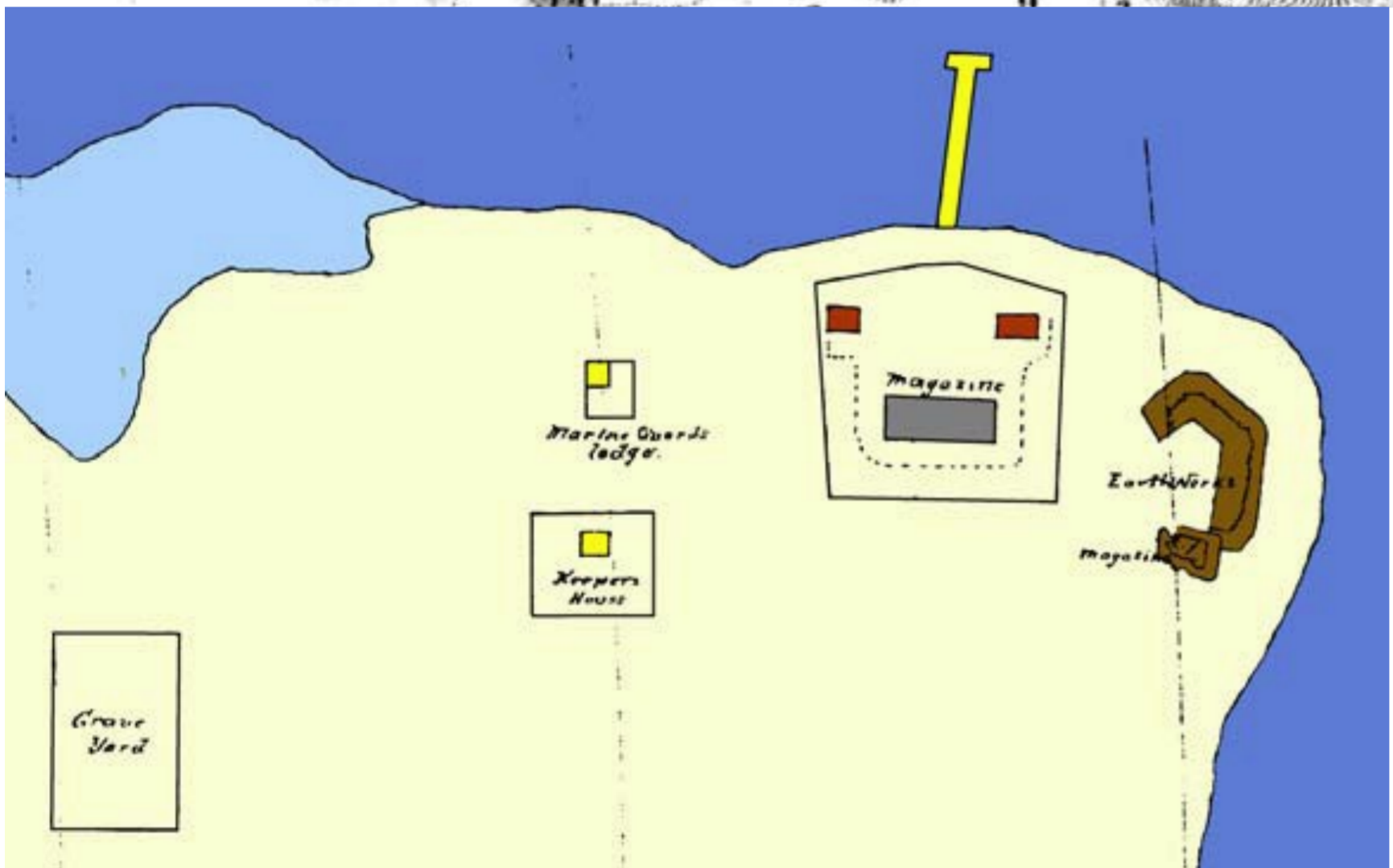


Mare Island on the 1850 San Francisco Bay map set produced by the US Coast Survey. Note the east-west distortion of the island, making it about twice as wide as it should be. Commission Rock, named for the commission that chose the base, was a significant hazard to navigation.

Mare Island on the 1863 Coast Survey map. This map shows the original plan for development of the base. Only one stone dry dock was built, although the plan clearly calls for eight more surrounding a large wet basin.



122 American Alley, Suite A, Petaluma Ca 94952
Voice: 707-762-2573
fax: 707-762-1791
Digsmart.com



The map to the left shows the earliest representation of the earth fort, Aug. 27, 1863. This copy has been scanned and colorized for emphasis. To the right is the USGS Quadrangle Map for Mare Island, showing the ultimate development of the shipyard. The picture in the lower left is the Magazine Ground as shown currently on Google Earth.

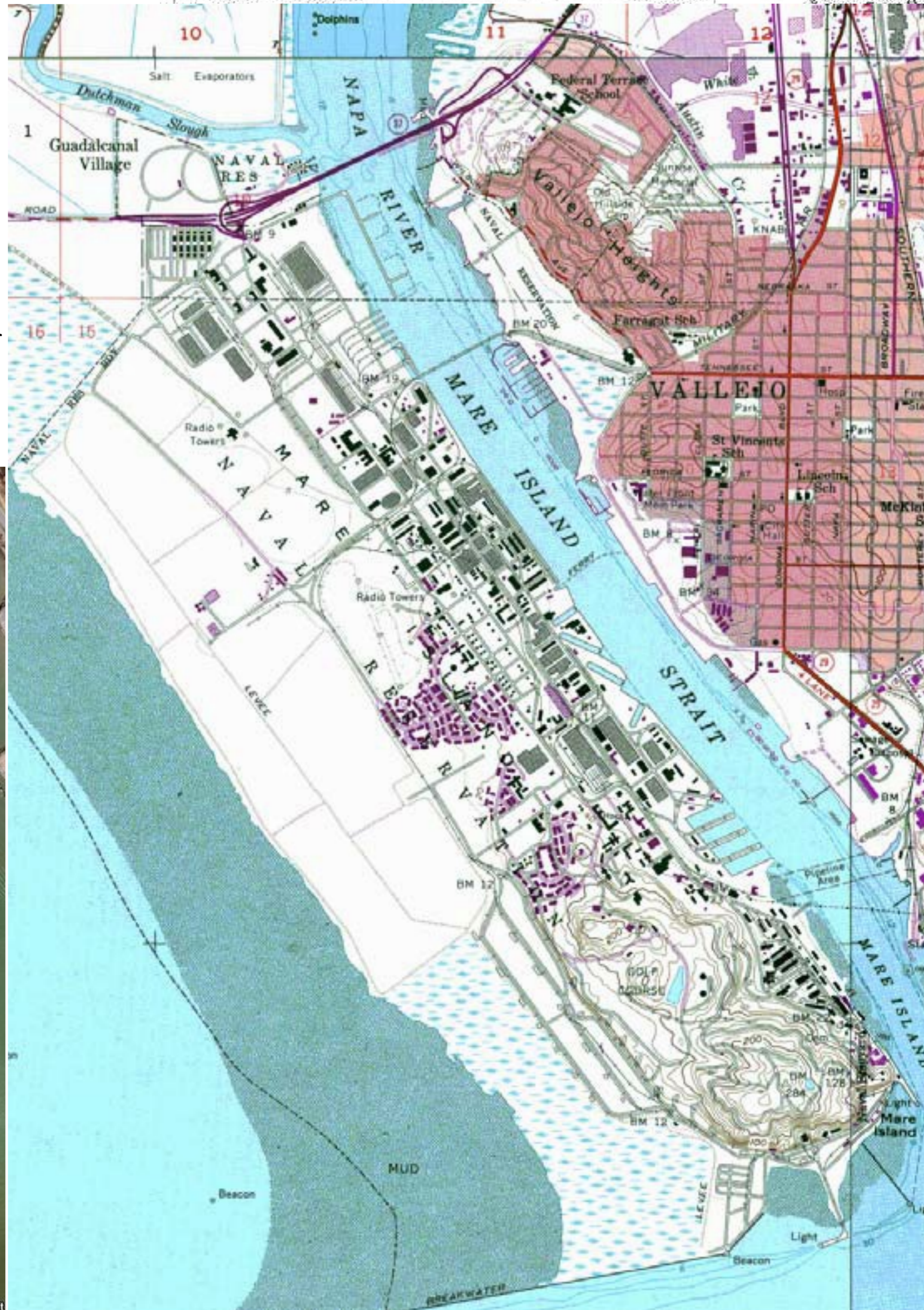


Image © 2007 TerraMetrics

© 2007 Google™

Pointer: 38°04'24.76" N 122°15'12.59" W

Streaming 100%

Eye alt: 3579 ft